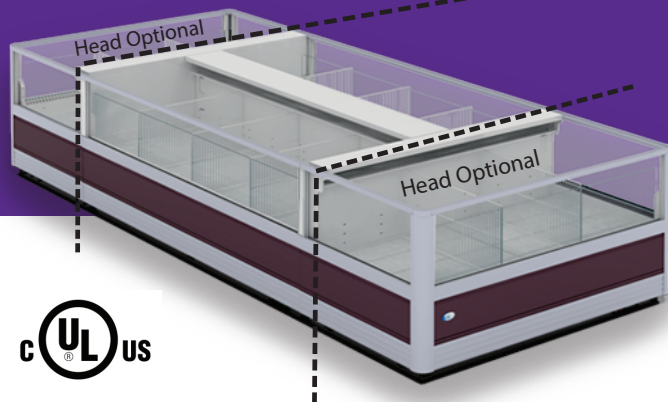




# KNIDOS-SUPERSTRUCTURE ISLAND FREEZERS - REMOTE



## Remote Island Freezer with 2 Row Top Shelves

### Standard features

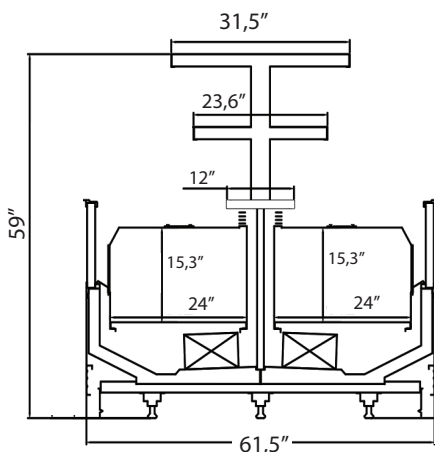
- Remote
- Manual Night Curtain
- Price Tag Holder in Front of Middle Desk
- Wire Dividers, Wire Floor
- Triple Glazed Side Wall Right/Left
- Superstructure With Led Lighting
- Externally Equalized TXV
- Thermostat Electronic Control
- Including 2 levels Shelves
- Undershelf 4000k Bar Led Light
- Wellington ERC2 Electronic fan motor
- Stainless Steel Bottom Floor
- Stainless Steel Evaporator Box with Heating Element and Evaporator Cover
- Electrostatic Powdered Paint For Both Interior-Exterior (choice of colors Black or White)

### Dimensions

Model	KNIDOS-12
Length (inches)	148"
Depth (inches)	61.5"
BTU/h	10885
BTU per Foot	885
Power	220V 60HZ 1ph
Amperage	36A
Evaporating Temp	-35C

Above mentioned measurement are from internal part of the equipment. Side panel will be extra Add approximately 2" each side for side panel thickness.

### Technical Drawings



\* Customizable options available; \* Multiple shelves available; \* All measurements are approximates; \* Specifications are subject to change without notice; \* All equipment are designed to operate in a controlled environment below 75°F (+24°C) temperature and HR 55% relative humidity;